

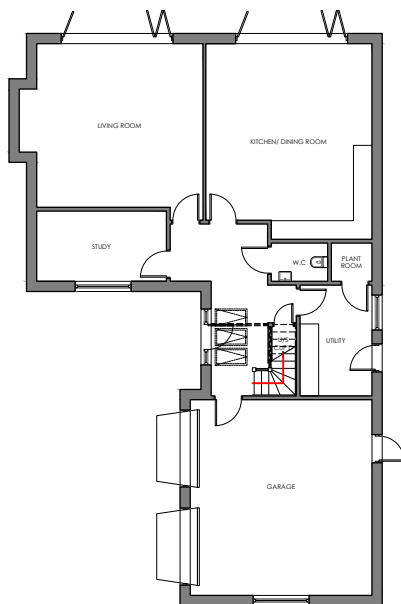


Copyright Benchmark Design & Build LLP 2010

## THE YEWE TREE

### Ground floor room sizes

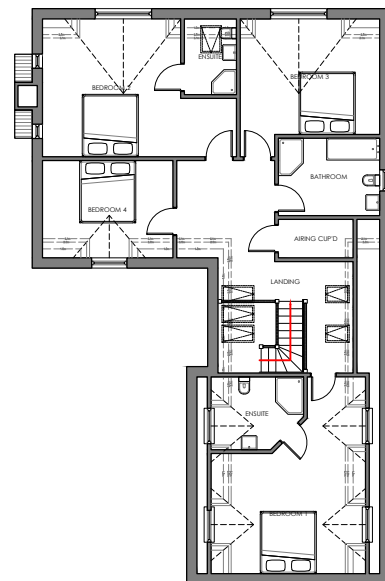
Kitchen & Dining Area	6.3 x 5.4m
Living Room	6.0 x 5.4m
Study	4.2 x 2.3m
Utility	3.6 x 2.3m
W/C	1.8 x 1.2m



Ground floor plan

### First floor room sizes

Bedroom 1	6.3 x 5.0m
Bedroom 1 En-suite	3.0 x 2.3m
Bedroom 2	6.2 x 4.4m
Bedroom 2 En-suite	2.4 x 1.7m
Bedroom 3	4.5 x 4.4m
Bedroom 4	4.2 x 3.1m
Bathroom	3.2 x 2.5m



First floor plan

Gross external area of house: 305m<sup>2</sup> / 3283ft<sup>2</sup>

